



2016-2017 Annual Report



Marsha Eichelberger
Executive Director



Tom Wynn
Board President

From the Executive Director and the Board President

Dear Friends,

You are amazing! The support of our congregations, volunteers, and donors has been stronger than ever. In the past year, more than 900 volunteers contributed 13,165 hours of their time. Our annual golf tournament had the best turnout in its history. A new congregation, St. Rose of Lima, joined the Hospitality Network.

Because of your involvement, Inter-Faith was able to significantly expand our service to Montgomery County families and children who are experiencing homelessness and food insecurity. In the past year, 33 families, including 43 adults and 71 children, received assistance with housing and 1,714 individuals received food assistance. We also secured funding for a new mental health initiative that will launch next year.

Most significantly, Hope Forest opened in December 2016. This house, purchased through the generosity of First Presbyterian Church of Ambler, provides two families with permanent housing as they continue to work toward their goals. With help from dozens of volunteers, we fully renovated the property to create a welcoming home for our new residents. The community's support and involvement allowed us to complete about \$75,000 of work for only \$14,000.

Unfortunately, the progress made by Inter-Faith and the families whose lives we touch is at risk. We are deeply concerned about how state and federal budget cuts will impact our ability to serve the community and, more importantly, how they might hinder our families' journeys toward self-sufficiency. Many low-income families rely on Medicaid, food assistance, and public housing to survive, and their potential suffering is pressing on our conscience.

This has been a year full of hope and wonderful accomplishments, but also of uncertainty about the future. We invite your continued partnership as we jointly celebrate God's love through service to and with our neighbors. More than ever, your support of Inter-Faith is sincerely appreciated as we stand with our community's most vulnerable residents so that, one day, all Montgomery County families have a safe, secure place to call home.

Marsha and Tom



I-FHA's mission is to empower vulnerable Montgomery County families to achieve and maintain self-sufficiency through effective community-based programs that bridge homelessness and independence.

Why?

Deep pockets of poverty and a dearth of affordable housing options in Montgomery County leave some families unable to meet their most basic needs.

Who?

All the families we serve are low income according to definitions from the U.S. Department of Housing and Urban Development; **10%** of our families are very low income, and **90%** are extremely low income.

How?

By stabilizing a family's housing situation and providing critical services that support movement towards self-sufficiency, I-FHA mitigates the effects of homelessness.

"From volunteers, to church members, to Inter-Faith staff—you all have been a blessing to my family. To see a community of people come together for a positive cause warms my heart. To witness people who don't even know me care enough to help provide my family with a home shows humanity in its purest form."

—a Hope Forest resident



Emergency Shelter (Interfaith Hospitality Network)

Our network of 21 local host congregations shelters families up to 90 days. Congregation volunteers bring and share meals, provide overnight assistance, and help with transportation. Families work with our case manager to establish and work toward goals in pursuit of stable housing.

Transitional Shelter (Hope Gardens)

Families are housed for up to two years and receive comprehensive support services. They work toward identified goals for a successful transition to safe, affordable, decent housing.

Support Services

Intensive Case Management

Families meet weekly with our case manager and work toward goals that will allow them to transition to a permanent housing situation.

Educational Life Skills Training

Our education program includes key skill building areas like financial literacy, health care and access, parenting, stress management, and employment skills.

Basic Needs

We provide comprehensive support with basic supplies and temporary financial assistance to cover expenses that threaten to disrupt a family's progress toward stability.

Aftercare

We stay connected with families who have moved on to permanent housing by providing support and resources to help them stay on track.

Food Cupboard

Montgomery County families who are experiencing hunger can access our Abington-based Food Cupboard, which is open five days a week, year-round.

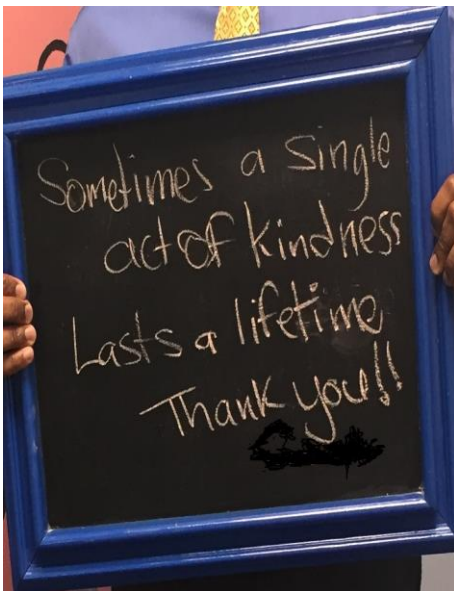


A Year of Success: Supportive Housing at Hope Forest

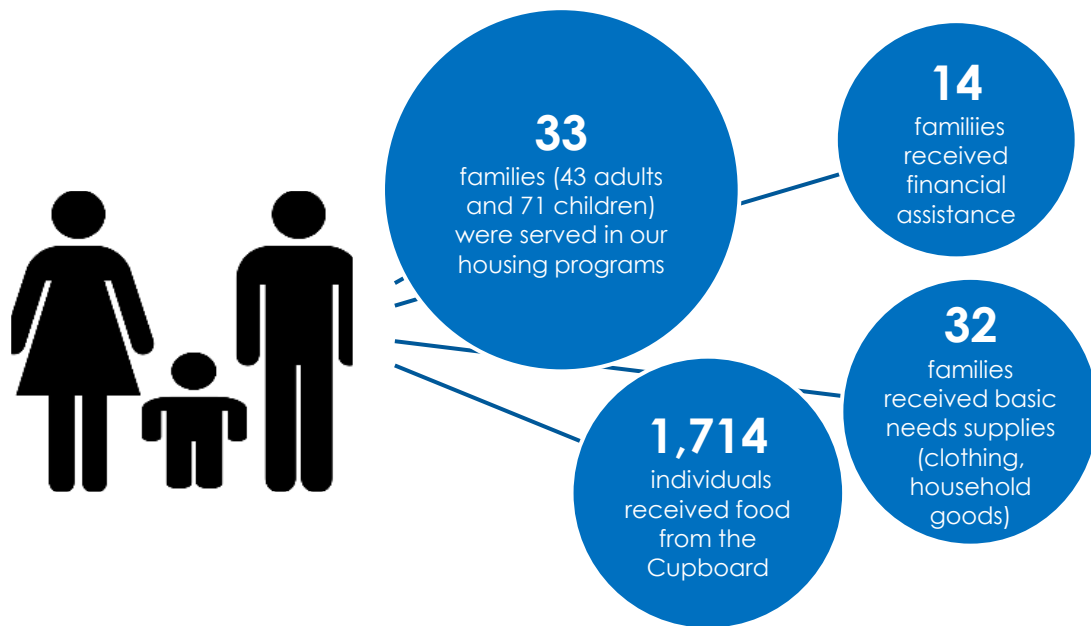
A generous gift from First Presbyterian Church of Ambler last year allowed I-FHA to purchase "Hope Forest," which houses two apartments that provide permanent housing for families. After extensive renovations, the first residents moved into their homes in December 2016.

Families at Hope Forest are working toward paying fair market rent, and I-FHA's case manager provides general oversight to promote their continual progress to independence. Goals include helping families to maintain a living wage job and to resolve the issues that have been a barrier to their stability in the past.

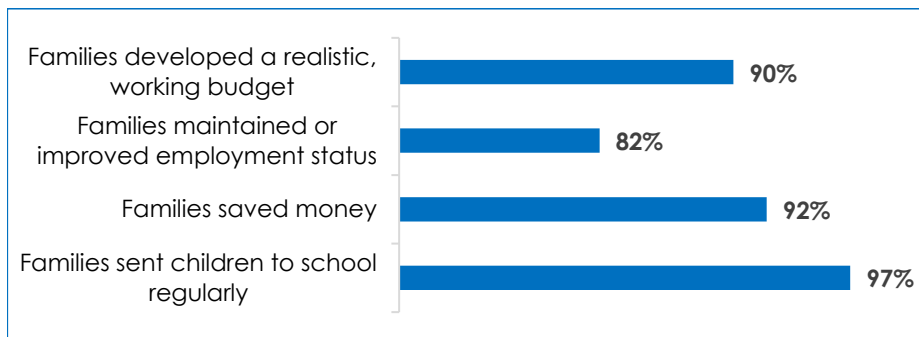
This program bridges the gap from transitional housing to permanent self-sufficiency.



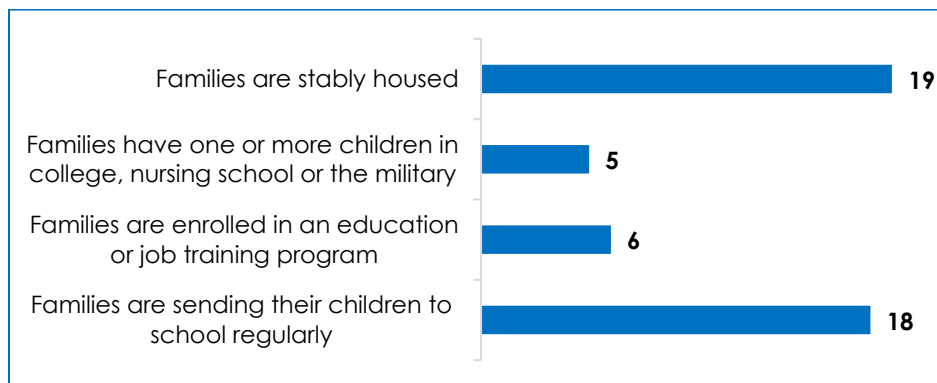
Impact



Families took goal-directed steps toward stability while in our shelter programs:



A survey of 20 graduate families showed that:



**908 volunteers
participating**



**13,165
hours clocked**



**Volunteer hours
valued at
\$317,803**



Volunteers

I-FHA capitalizes on significant volunteer support in order to provide cost-effective services.

Emergency shelter volunteers bring and share meals with our families, provide overnight assistance, and help with transportation.

Hope Gardens volunteers help with painting, cleaning, sorting donations, and maintenance.

Specialized volunteers facilitate our parent education workshops and children's programs.

Food Cupboard volunteers package and distribute food and provide additional service resources to our families.



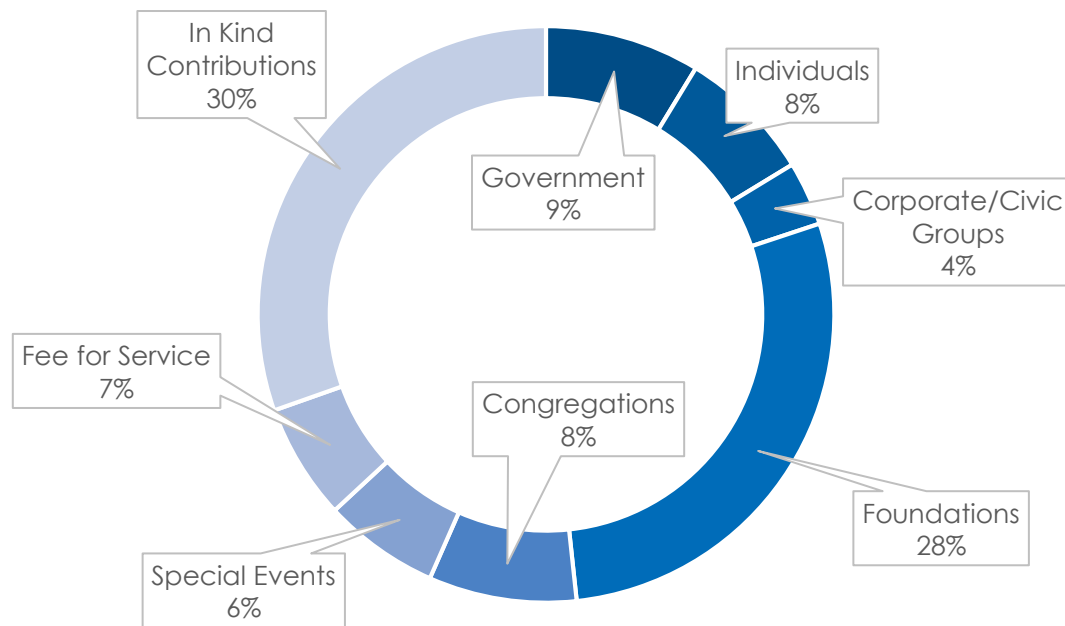


Interfaith Hospitality Network Congregations

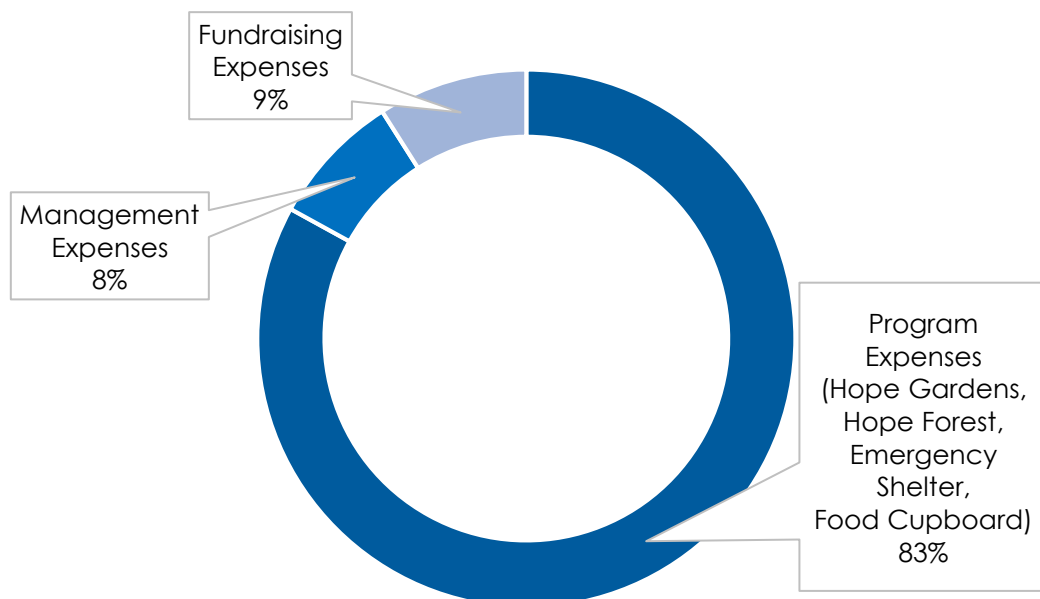
Ambler Church of the Brethren
Ambler Mennonite Church
Bethlehem Baptist Church
Congregation Beth Or
Congregation Kol Ami
First Baptist Church, Lansdale
First Presbyterian Church of Ambler
Grace Baptist Church of Blue Bell
Gwynedd Friends Meeting
Jarrettown United Methodist Church
Maple Glen Bible Fellowship
New Beginnings Community Church
Or Hadash
Sanctuary United Methodist Church
St. Anthony's of Padua RC Church
St. Matthew's Episcopal Church
St. Rose of Lima
St. Thomas' Church, Whitmarsh
Supplee Presbyterian Church
Trinity Episcopal Church, Ambler
Upper Dublin Lutheran Church



Income



Expenses



Sources of Support

Foundations

Betty and Leo Balzereit Foundation
 Breaking the Cycle Foundation
 Cedarcrest Charitable Foundation
 Charter Foundation
 Connelly Foundation
 Dolfinger-McMahon Foundation
 Drueding Foundation
 Eden Bridge Foundation
 Fox & Roach Charities
 Genuardi Family Foundation
 Grace S. and W. Linton Nelson Foundation
 Grandom Institution
 Green Tree Community Health Foundation
 HealthSpark Foundation
 Helen D. Groome Beatty Trust
 Helping Hand Foundation
 Leo & Peggy Pierce Family Foundation
 Marion Prochazka Charitable Trust
 Mill Spring Foundation
 Montgomery County Foundation
 PNC Charitable Trust
 Stratton Foundation
 TJX Foundation
 VNA Foundation of Greater North Penn
 Wawa Foundation
 Westfield Insurance Foundation
 Willow Foundation
 Windmill Foundation
 W. W. Smith Charitable Trust
 Your Way Home

Corporations

Clemens Family Corporation
 Earth Engineering
 Essent
 FedEx
 Item Media
 R&R Wood Products
 Therm-Omega-Tech
 Univest

Government

Montgomery County Affordable Housing Trust Fund
 Federal Emergency Management Agency

Organizations

Family Promise
 Fernley Fund
 New Life Thrift
 Rotary Club of Blue Bell
 Rotary Club of Conshohocken-Plymouth-Whitemarsh
 Rotary Club of Hatboro



"What you realize immediately is that you can't really tell the difference between who is a volunteer here, or a staff member, or a family in need, and that really drives the point home for me that we're all just people, and we all just want dignity, respect, and a chance to do good in the world."

—an Inter-Faith volunteer



I-FHA Board of Directors

Tom Wynn, President
Community Volunteer

Lisa Miller, Vice President
Principal, LAM Consulting Services, LLC

Susan Sullivan, CPA, Treasurer
Community Volunteer

Graham Kilshaw, Secretary
President, Item Media

Wayne Carpenter
Community Volunteer

Barbara Chavous-Pennock
CEO, Somerset Academy

Shafin Esmail
Branch Manager, Woodforest National Bank

Kali Gibson
Senior Standards Analyst, B Lab

Mark Harris
Attorney, Kraut Harris, PC

Tim Joyce
Owner, Stonecraft Tile

Margaret Koller
Senior Vice President, Cotiviti Healthcare

Rev. Charles Quann, Vice President
Pastor, Bethlehem Baptist Church

Hildy Richelson
President, Scarsdale Investment Group

Rick Rodes
Community Volunteer

Ben Sanchez
Real Estate Attorney

Sally West Williams
Community Volunteer

Board Member Emerita

Lei Barry
Keller-Williams Realty



31 S. Spring Garden Street, Ambler, PA 19002 | (215) 628-2334 | www.i-fha.org